

Clinical case

DESS[®] C-Base and Cerec[®] Sirona[®] system:
Seamless digital workflow

Dr. Konstantinos Tokmakidis presents a zirconia
crown on a C-Base[®] for tooth 36





Dr. Konstantinos Tokmakidis
(Switzerland)

CASE PRESENTATION

A healthy 70-year-old male patient presented with an unrestorable tooth, which was extracted in October 2024.

In January 2025, an implant was placed following an early placement protocol. As the primary stability was low (10 Ncm), submerged healing was selected. Re-entry was performed in May 2025, when the implant showed sufficient stability to proceed with the restoration.



Initial situation





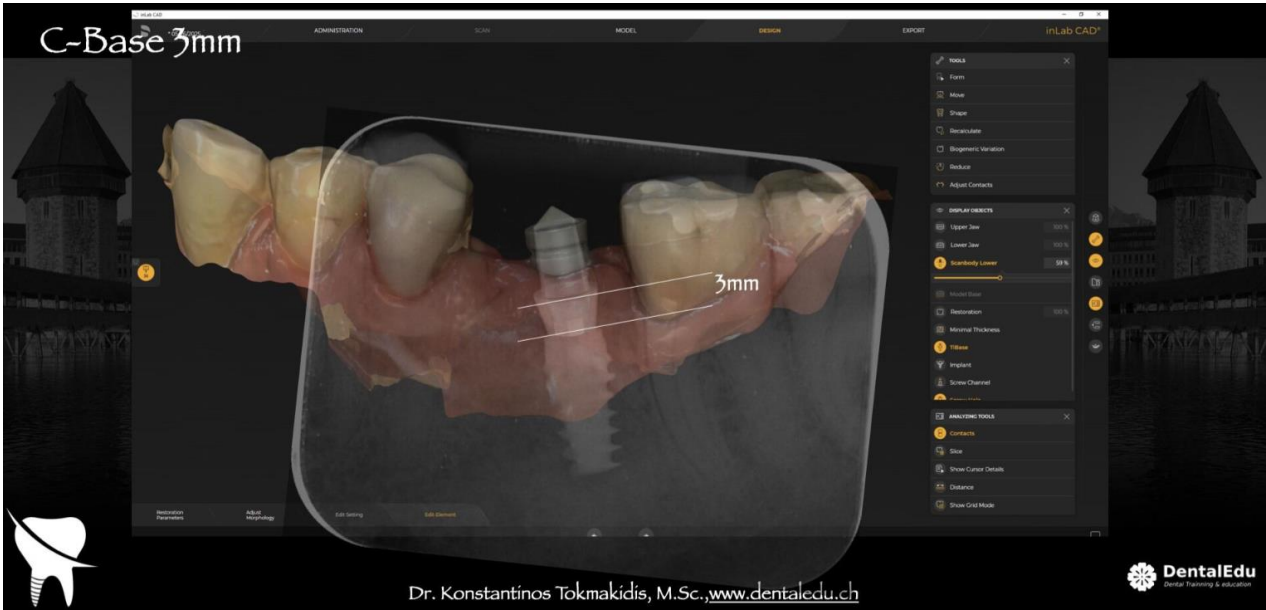
Situation after healing following re-entry. The peri-implant tissues are ready for the definitive scan (occlusal and buccal views).

The scan was performed with a 3mm C-Base[®] in place, the camera used was a Primescan and the DS Connect software.



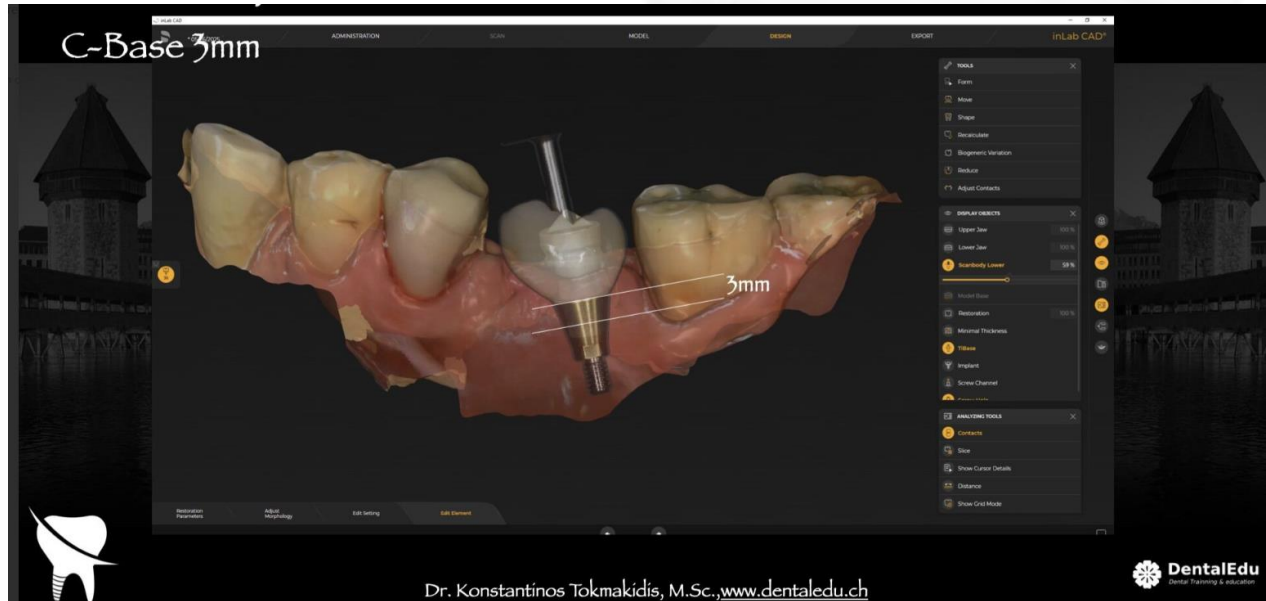
This image shows the interpolated buccal view in the DS inLab software.

The software was instructed to position the scan body on a Ti-Base, which resulted in the position shown.



As a 3-mm C-Base® was used, which is not recognised by the software, a discrepancy appears between the calculated and the actual implant position.

However, this discrepancy does not affect the fit of the definitive restoration.



C-Base®

DESS ref. 58.XXX non-engaging - 59.XXX engaging

Available in different gingival heights

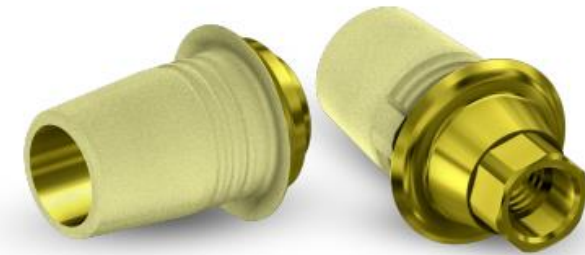


The most comprehensive solution compatible with the Cerec® Sirona® system

Manufactured in Titanium Grade V ELI

Screw included, same as implant brand manufacturer

Compatible with 15 implant systems



Non-engaging



Engaging



SelectGrip®

Increases bonding retention up to 500%



TECHNICAL INFORMATION

- Titanium Grade V ELI 23
- Gold anodized surface
- SelectGrip® surface treatment
- Two versions: engaging and non-engaging
- Typically a cementing surface of 56,60mm²
- Shaft height of 4,68mm
- Combined with our free libraries for Exocad®, 3Shape®, Dental wings® and Blenderfordental®
- CE: Class IIb
- FDA: Class II



FEATURES

- Pure Switch® concept
- Multiple gingival heights options: 0,3-3,0mm depending on the system
- Screw included - same screw design as OEM
- Same Sirona Ti-Base design and shape



CLINICAL BENEFITS

- SelectGrip® surface treatment: 5x better cement retention
- Warmer gingival tone in case of gingival retraction

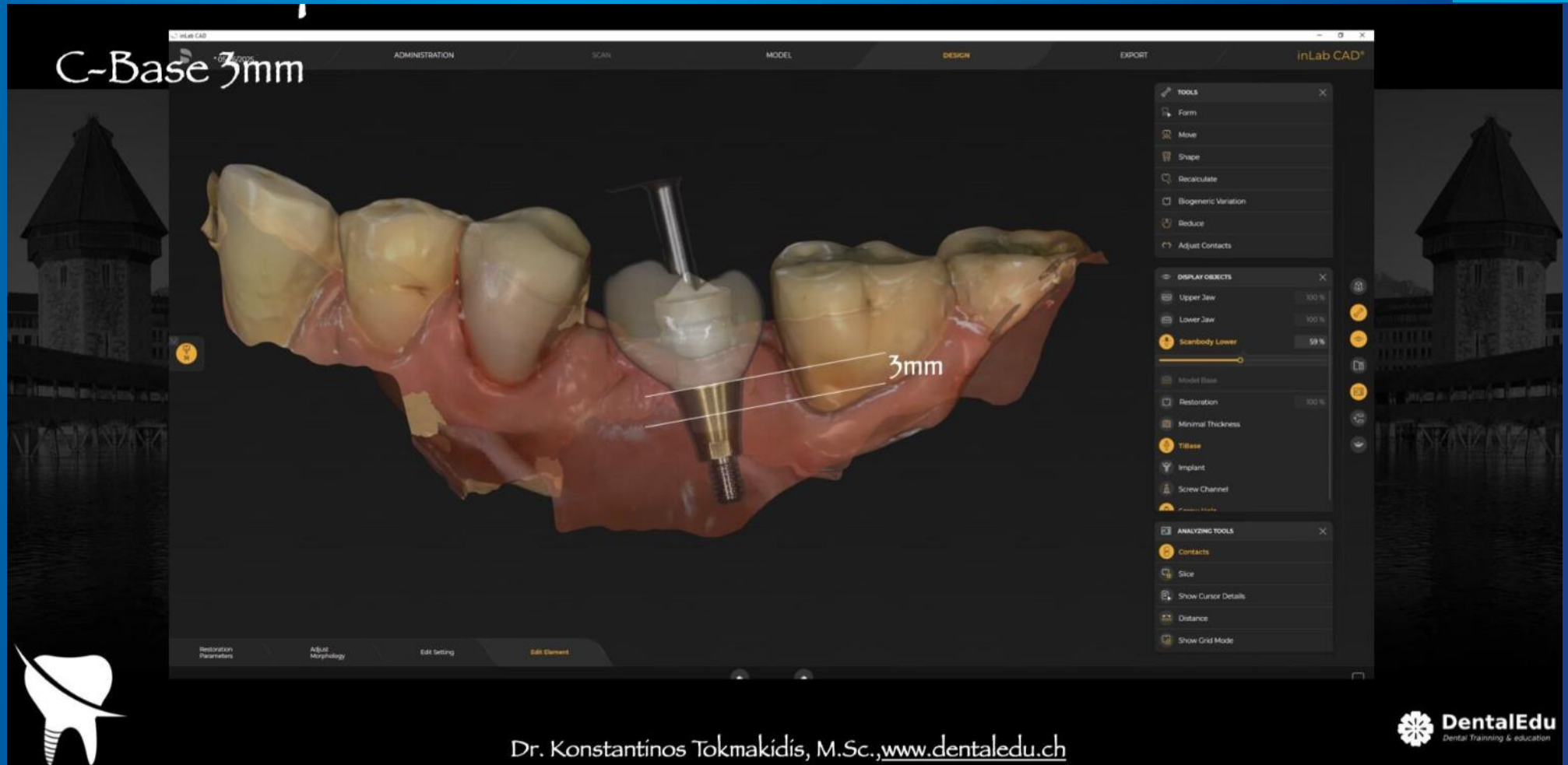
15 SYSTEMS



Overlay of the definitive restoration on a 3-mm C-Base® based on the calculated position.

Note the discrepancy in the implant position; however, the occlusal portion of the restoration remains at the correct height.

Planning





These images show the occlusal and buccal views of the peri-implant tissues, which are fully prepared to receive the final restoration.

The scan was performed with a 3-mm C-Base® in place, using a Primescan intraoral scanner and DS Connect software.



Final restoration seated (occlusal view).

Radiographic verification of the seated restoration.

Note the precise fit of the C-Base®.





Dr. Konstantinos Tokmakidis

Switzerland

- **Degree in Dentistry (DDS) 1996-2003.** Ernst-Moritz- Arndt- University of Greifswald (Germany)
- **PHD (Dr. Med. Dent) in Implant Loading and Loading concepts with a “Magna Cum Laude” decoration 2004-2007.** Rwth Aachen University (Germany)
- **Post-Graduate Prosthetics Certification 2004-2008.** Rwth Aachen University (Germany)
- **Post-Graduate Certification in Implantology 2007-2009.** Rwth Aachen University (Germany)
- **MSC in Periodontology and Implant Therapy 2012-2014** University of Dresden (Germany)
- **Private Practice in Adligenswill, Lucerne.** Oral Implantology, Prosthetics and Aesthetic dentistry with an in-house lab.
- **Founder of DentalEdu:** Post-graduate dental education

