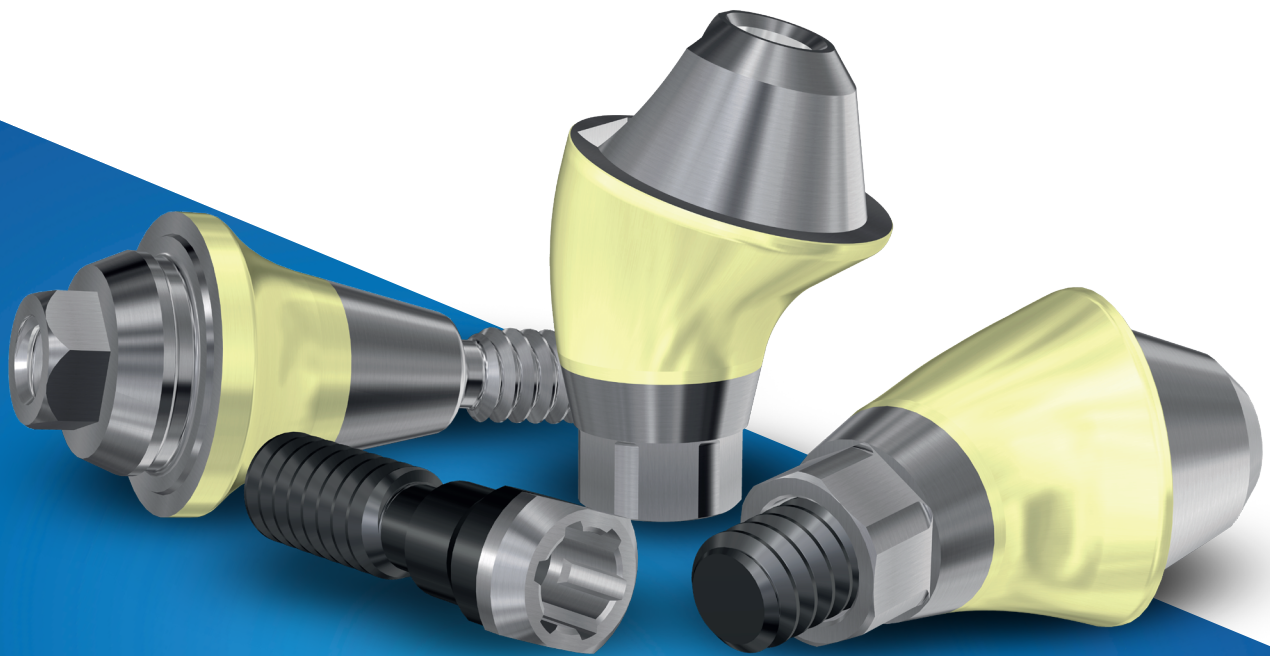


 DESS

MA+ & Multi-Unit





# MULTI-UNIT

DESS® Multi-Unit Abutment system is a versatile and innovative solution for dental professionals who need to restore multiple implants in a single patient. Designed to work with the most popular implant platforms, DESS® MUA is a flexible and adaptable choice for any dental practice.

The most comprehensive range of abutments for partial and full arch restorations:

- Multi-Unit Abutments
- UniAbutments
- Converter Abutments

## Standardised Prosthetic Platform

DESS® Multi-Unit is ideal for ALL-on-X restorations, with a standardised prosthetic platform (based in Nobel® Biocare shape design), which streamlines full-arch treatments.

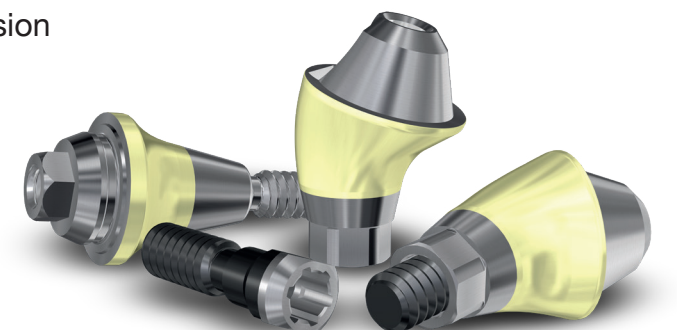
## Multi-Unit main advantages:

- Ideal for ALL-on-X cases (4 to 6 implants)
- Shorter treatment times
- Improved stability on connection
- Different gingival heights
- Open CAD Libraries

## MUA+

DESS® has created the Next Generation MUA:

- **Anatomical profile** for a more natural transition
- **periocoat® Surface** (ZrN coating)
  - Less inflammation & plaque adhesion
  - Helps prevent periimplantitis



# Straight & Angled abutments

Designed with the precise DESS® connection, our Multi-Unit range ensures an optimal prosthesis-implant connection fit.

## Adaptability to every clinical case


- 3 different angulations: 0°, 17° and 30°
- 5 different gingival heights
- MUA available in 14 compatibilities
- MUA+: anatomical profile + periocoat®



## Available compatibilities:

 NOBELACTIVE® & NOBELREPLACE® CC  
ACTIVE HEX

 NOBEL REPLACE SELECT™  
TRI-LOBE

 NOBELBRÅNEMARK®  
EXTERNAL HEX  
UNIVERSAL

 3i OSSEOTITE®  
EXTERNAL HEX USA

 STRAUMANN® BONE LEVEL  
CONICAL BL

 STRAUMANN® BLX  
CONICAL BLX

 NEODENT GRAND MORSE®  
NEO GM

 ZIMMER SCREW-VENT®  
INTERNAL HEX USA

 ASTRA TECH IMPLANT  
SYSTEM™ EV  
CONIC EVO

 ASTRA TECH OSSEOSPEED™  
INTERNAL HEX CONIC

 OSSTEM® TS  
CONIC OSS

 BIOHORIZONS® INTERNAL  
INTERNAL HEX BH

 MIS® SEVEN  
INTERNAL HEX MI

 DENTIUM  
SUPERLINE™ &  
IMPLANTIUM®  
CONIC DENT



## Extended Implant Health

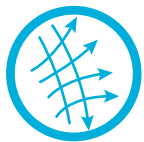
DESS® has developed **periocoat®**, a cutting-edge patented **ZrN coating** solution designed to proactively address gingival problems and enhance the overall implant experience.

This innovative technology acts as a shield, actively inhibiting the buildup of dental plaque and the subsequent onset of gingival infections. Additionally, it facilitates hygiene, increases strength and improves the overall mechanical performance.



### Less biofilm genesis on the surface

With less biofilm and plaque, there will be less quantity and quality of bacteria that can cause soft tissue inflammation.



### Increased collagen stability

ZrN creates less of an inflammatory burden and collagen degradation in the gingival tissue as evidenced by less aMMP8 biomarker in the gingival fluid.



### Surface is more resistant to corrosion

Dental plaque produces acid that will corrode the surface and increase roughness. ZrN is harder and has a smaller friction coefficient, which makes it more resistant to corrosion.



### Increased adhesion of fibroblasts

A higher adhesion of fibroblasts locks the path between the surface and soft tissue preventing bacteria to enter the gingival margin.



### Six times harder than Titanium Oxide

Will not scratch as easily when cleaned using curettes, ultrasound or other instruments.



### ZrN has a warm gold hue

A warmer goldish hue has aesthetic advantages compared to the titanium grey.



# MULTI-UNIT



## TECHNICAL INFORMATION

- Titanium Grade V ELI 23
- DLC coated screws<sup>1</sup>
- Three versions: straight (non-engaging), 17° and 30° angulations (engaging)
- CE: Class IIb
- FDA: Class II



## FEATURES

- Pure Switch® concept
- Same cone design for all DESS Multi-Unit, same shape as Nobel®
- Multiple gingival heights options: 1-5mm depending on the system
- Screw included - same screw design as OEM
- Placement carriers included for straight and angled versions
- Fully shaped connection geometry
- Higher material strength and fully threaded areas
- Higher screwing torque up to 35Ncm<sup>2</sup>



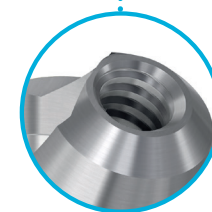
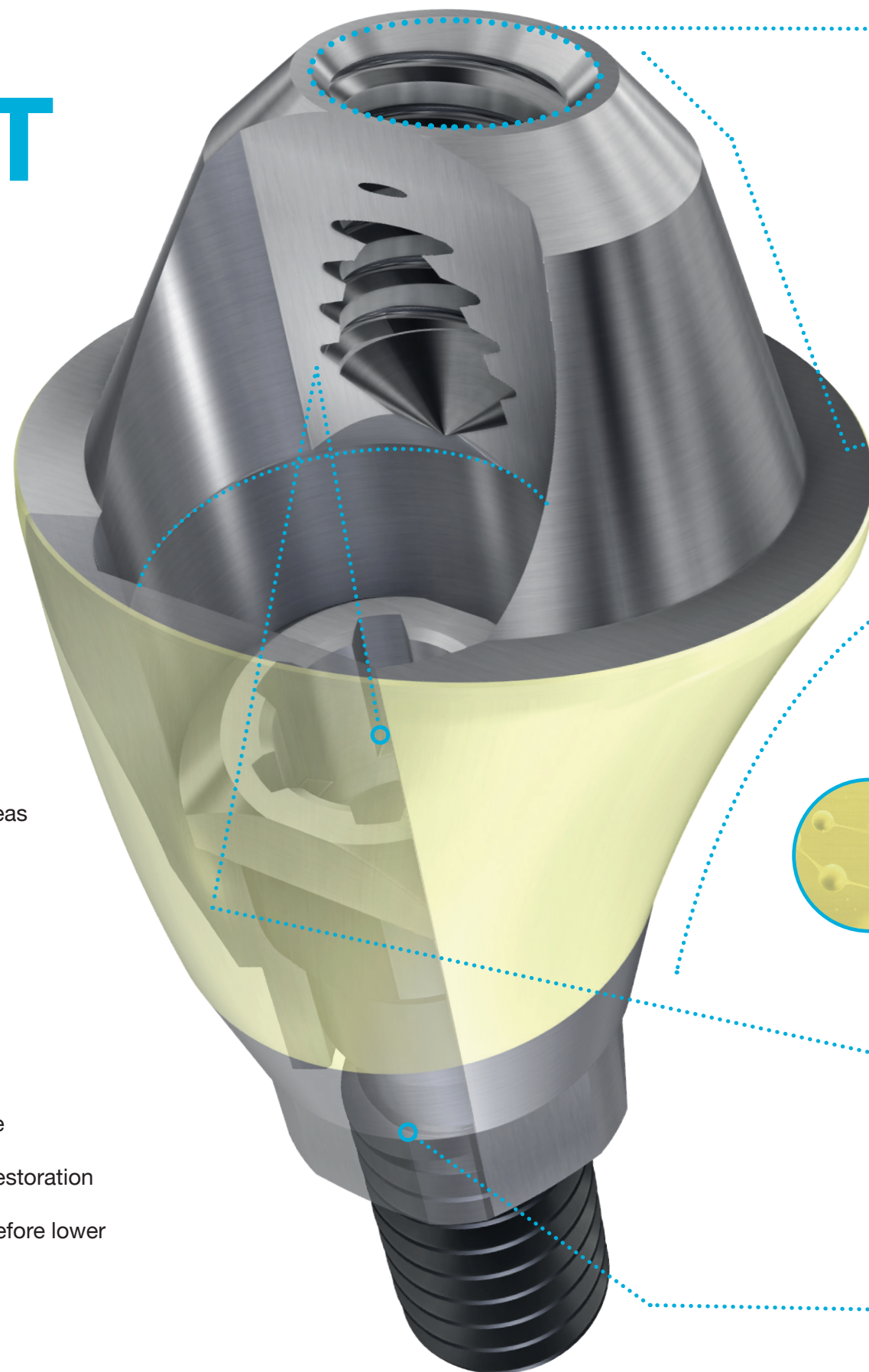
## CLINICAL BENEFITS

- Ideal for ALL-on-X: standardised prosthetic platform for screw-retained prosthetics
- Available prosthetic assortment for Multi-Unit
- The higher torque avoids screw loosening

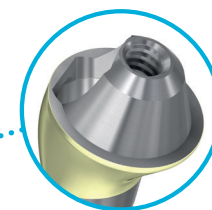


## BUSINESS BENEFITS

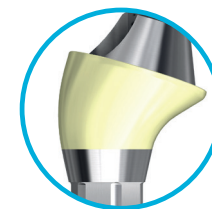
- **Pure Switch®**: no special tools required, same workflow as the implant connection's product
- Digital Workflow: a multi-platform prosthetic restoration library system to simplify the digital process
- One single assortment of MUA products, therefore lower investment



Full thread cone connection for a safer and more stable prosthesis.



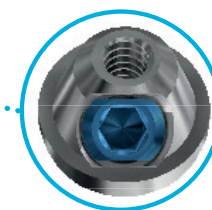
The prosthetic part of DESS® MUA is the same as Nobel® Biocare System, regardless of the chosen implant connection.



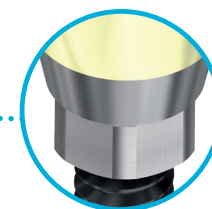
Smooth gingival transition due to its anatomical shape, which allows the gingiva to rapidly adapt to the abutment.



- Less inflammation.
- Less plaque adhesion.
- Higher corrosion resistance.
- Easier to clean.
- 6x harder than Titanium Oxide.



The vertical screw access facilitates placement and allows a maximum torque tightening of 35Ncm, preventing screw loosening and enhancing stability.



Full shaped connection provides more stability.

<sup>1</sup>On Nobel compatibilities

<sup>2</sup>Depeding on the compatibility



## Standard Multi-Unit

- Available in 14 implant connectins
- 3 different angulations: 0°, 17° and 30°
- 5 different gingival heights
- Same prosthetic platform of 4.8 as Nobel® Biocare

## Abutments on Multi-Unit & MUA+

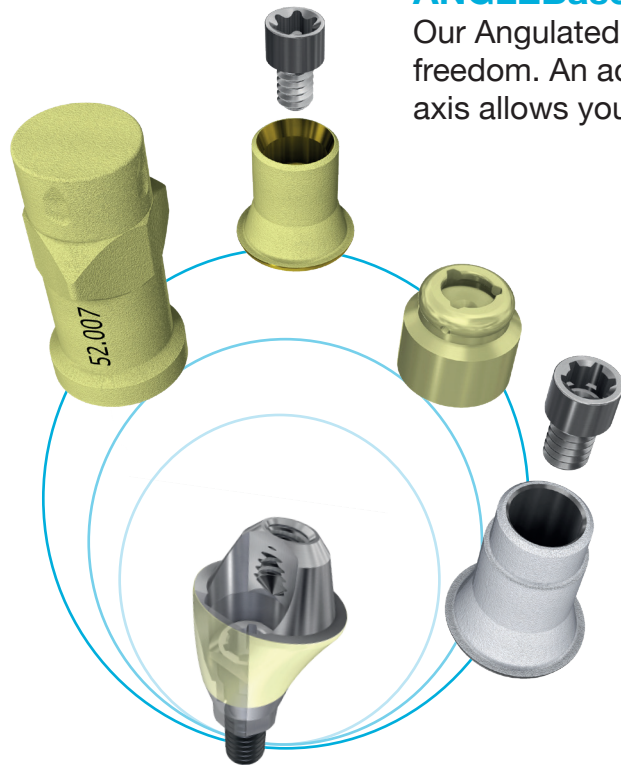
### Scan Abutment on Multi-Unit & MUA+

Use the DESS® Scan Abutment on MUA with your CAD/CAM System to design your digital solutions for full arch restorations.



### ANGLEBase® on Multi-Unit & MUA+

Our Angulated Screw Channel solution gives you total angular freedom. An additional 25° entry within a 360° rotation on its axis allows you to get the exact angle you need.



### DESSLoc® on Multi-unit & MUA+

Transform a fixed prosthesis into a removable overdenture with DESSLoc® on Multi-Unit.

### Ti-Base para Multi-unit & MUA+

Available in 2 different shaft heights, 6 & 8 mm, DESS® Ti-Base allows you to choose according to your clinical case needs.



### Special Tool

Adjust to the recommended torque using the DESS® Multi-unit tool attached to a torque wrench.

## MUA+

### Next Generation MUA

- Available in 3 implant connectins (CONICAL BLT, ACTIVE HEX & NEO GM)
- 3 different angulations: 0°, 17° and 30°
- 5 different gingival heights
- Same prosthetic platform of 4.8 as Nobel® Biocare
- **Anatomical profile** for a more natural transition
- **periocoat® Surface** (ZrN coating):
  - Less inflammation & plaque adhesion
  - Helps prevent periimplantitis

- 2 indexation versions\*

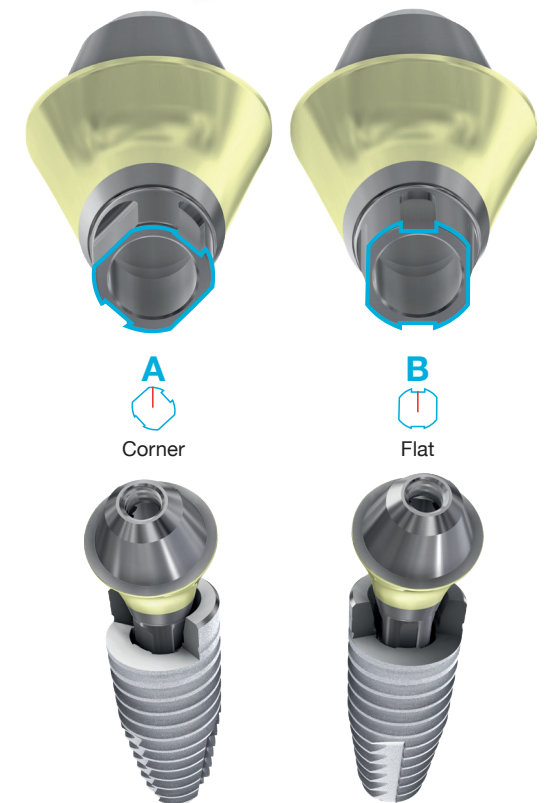
\*Available for CONICAL BLT compatibility



### A & B CONICAL BLT

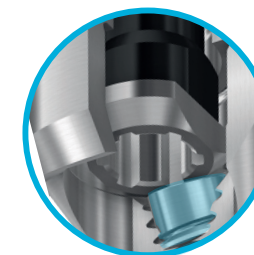
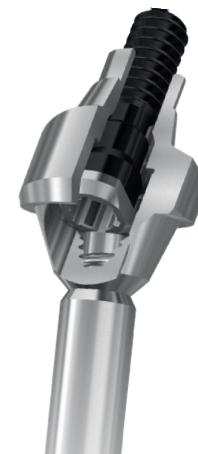
Due to CONICAL BLT's connection shape, we have incorporated two versions to allow a perfect fit of the MUA to the implant orientation without compromising the insertion for the prosthetic restoration.

- **Type A:** oriented to the corner of the implant connection.
- **Type B:** oriented to the flat face of the implant connection.



### Carriers

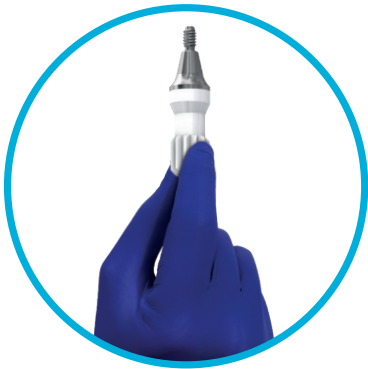
All our Multi-unit abutments include a carrier, which will help you place the abutment correctly.



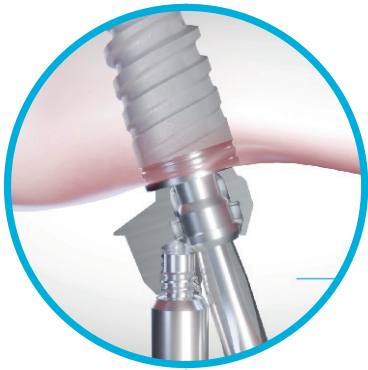
The angled Multi-unit carrier has been especially designed to act as a contact point with the screw to prevent it from falling.



Instructions for use:



Place straight Multi-Units by hand and snap the transporter out. Use the straight Multi-unit tool (RP or WP) with a manual torque wrench to tighten the straight mlti-unit abutment according to the recommended torque shown in the table at the end of this document.



Place the angulated Multi-Unit and tighten the final screw, according to the recommended torque in the table at the end of this document, then unscrew the transporter.



Use The DESS scan abutments, to work on your CAD/CAM System or take the impression with the DESS transfers for Multi-unit.

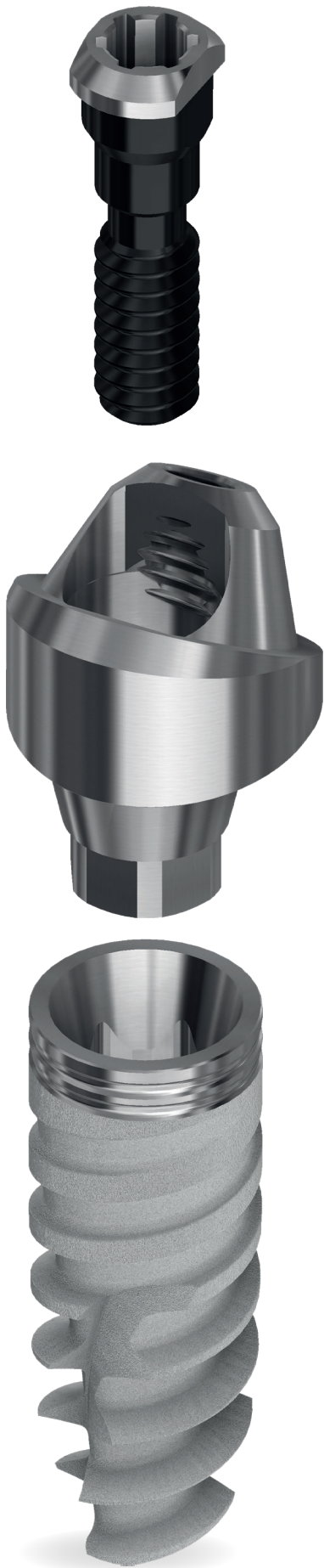


Insert fixed prothesis and tighten the prosthetic screws by alternating left and right side. Finally tighten the prosthetic screws at a maximum of **15Ncm**.  
The abutment screw is the same as the Nobel Multiunit screw

It is recommended to schedule a patient visit, 10 days after fitting the overdenture to check and re-tighten the screw

DESS® Multi-unit screws  
recommended torque

|  | PLATFORM                | TORQUE (Ncm) |
|--|-------------------------|--------------|
| ACTIVE HEX<br>NOBELACTIVE® &<br>NOBELREPLACE® CC | 3.5                     | 35           |
|  | 4.3                     | 35           |
| TRI-LOBE<br>NOBEL REPLACE<br>SELECT®             | 3.5                     | 35           |
|  | 4.3                     | 35           |
|  | 5.0                     | 35           |
| EXT HEX<br>UNIVERSAL<br>NOBELBRÅNEMARK®          | 3.5                     | 35           |
|  | 4.1                     | 35           |
|  | 5.1                     | 35           |
| EXT HEX USA<br>3i OSSEOTITE®                     | 3.4                     | 20           |
|  | 4.1                     | 20           |
| CONICAL BL<br>STRAUMANN® BONE LEVEL              | 3.3                     | 35           |
|  | 4.1                     | 35           |
| CONICAL BLX<br>STRAUMANN® BLX                    | 4.5                     | 35           |
|  | 5.7                     | 35           |
| NEO GM<br>NEODENT GRAND MORSE®                   |                         | 20           |
| INT HEX USA<br>ZIMMER SCREW-VENT®                | 3.5                     | 30           |
|  | 4.5                     | 30           |
| CONIC EVO<br>ASTRA TECH IMPLANT<br>SYSTEM™ EV    | 3.6                     | 25           |
|  | 4.2                     | 25           |
|  | 4.8                     | 25           |
| INT HEX CONIC<br>ASTRA TECH<br>OSSEOSPEED™       | 3.5 - 4.0               | 20           |
|  | 4.5 - 5.0               | 25           |
| CONIC OSS<br>OSSTEM® TS /<br>HIOSEN® ET          | MINI                    | 20           |
|  | REGULAR                 | 30           |
| INT HEX BH<br>BIOHORIZONS®<br>INTERNAL           | 3.5                     | 30           |
|  | 4.5                     | 30           |
| INT HEX MI<br>MIS® SEVEN                         | STANDARD                | 25           |
|  | WIDE                    | 25           |
| CONIC DENT<br>DENTIUM SUPERLINE™<br>IMPLANTIUM®  | 3.8/ 3.6/ 4.0/ 4.5/ 5.0 | 30           |







# MULTI-UNIT CONNECTION






 non-engaging



 Platform Colour Coded



 Platform Colour Coded

| HEALING<br>ABUTMENT |   |  | RP         | MULTI-UNIT | WP     |
|---------------------|---|--|------------|------------|--------|
|                     |   |  | 4.8        |            | 6      |
| Uni Grip            |  |  | 20.100     |            | 20.054 |
| Hex 1,20mm          |  |  | 20.100H120 |            |        |
| Hex 1,22mm          |  |  | 20.100H122 |            |        |
| Hex 1,27mm          |  |  | 20.100H127 |            |        |
| Torx Ball           |  |  | 20.100TB*  |            |        |

## SCAN ABUTMENTS



50.007



52.007

52.047



EXTISA extender for 52.xxx.



52.xxx includes manual tool DTPEIPEEK.

## TRANSFER

|       |         |           |        |
|-------|---------|-----------|--------|
|       |         | 17.007    | 17.050 |
| 5,0mm |         | 17.507    |        |
| 5,0mm | 4 Pack. | 17.507-P4 |        |
| 8,0mm |         | 17.807    |        |
| 8,0mm | 4 Pack. | 17.807-P4 |        |

## DIGITAL ANALOGUE

Retention screw Hex 1,27 mm 19.712-P5

14.007/D

14.047/D

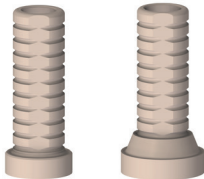
## ANALOGUE

14.007











14.047

10 Pack.











14.007-P10

















## TEMPORARY ABUTMENT

|            |   |   | RP                   | WP           |
|------------|---|---|----------------------|--------------|
|            |   |   | 4.8                  | MULTI-UNIT 6 |
| Uni Grip   |  |  | 24.007               | 24.030       |
| Hex 1,20mm |  |  | 24.007H120<br>19.055 |              |
| Hex 1,22mm |  |  | 24.007H122<br>19.065 |              |
| Hex 1,27mm |  |  | 24.007H127<br>19.110 |              |
| Torx       |  |  | 24.007TB*<br>19.306  |              |

## TEMPORARY ABUTMENT PEEK


|            |   |   |                   |        |
|------------|---|---|-------------------|--------|
| Uni Grip   |    |    | 25.707            | 25.754 |
| Hex 1,20mm |    |    | 24.757*<br>19.055 |        |
| Hex 1,22mm |    |    | 24.767*<br>19.065 |        |
| Hex 1,27mm |   |   | 24.777*<br>19.110 |        |
| Torx       |  |  | 24.787*<br>19.306 |        |

## TI-BASE

|       |            |   |   |                      |        |
|-------|------------|---|---|----------------------|--------|
| 6,0mm | Uni Grip   |  |  | 15.007               | 15.054 |
| 6,0mm | Uni Grip   |  |  | 15.007-P10           |        |
| 6,0mm | Hex 1,20mm |  |  | 15.007H120<br>19.055 |        |
| 6,0mm | Hex 1,22mm |  |  | 15.007H122<br>19.065 |        |
| 6,0mm | Hex 1,27mm |  |  | 15.007H127<br>19.110 |        |
| 6,0mm | Torx       |  |  | 15.007TB*<br>19.306  |        |
| 8,0mm | Uni Grip   |  |  | 15.007/8             |        |



## TI-BASE CASTABLES

|         |   |             |           |
|---------|---|-------------|-----------|
| 5 Pack. |  | 32.007-P5   | 32.054-P5 |
| 5 Pack. |   | 32.007/8-P5 |           |



ANGLEBase®

|          |  |  |            |        |
|----------|--|--|------------|--------|
|          |  |  | 36.007     | 36.054 |
| 10 Pack. |  |  | 36.007-P10 |        |

PLASTIC SLEEVES FOR ANGLEBase®



|         |     |           |
|---------|-----|-----------|
| 5 Pack. | 0°  | 33.700-P5 |
| 5 Pack. | 10° | 33.701-P5 |
| 5 Pack. | 20° | 33.702-P5 |

Torx Screw ANGLEBase®



|                     |        |         |
|---------------------|--------|---------|
| (replacement screw) | 19.306 | 19.331* |
| Recommended torque  | 15 Ncm | 15 Ncm  |

Torx BALL SCREWDRIVER



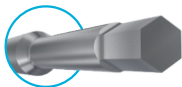
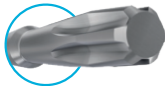
|          |          |          |          |
|----------|----------|----------|----------|
| 20mm     | 24mm     | 30mm     | 35mm     |
| DT20TB06 | DT24TB06 | DT30TB06 | DT35TB06 |

SCREWS FOR SUPERSTRUCTURES



|          |     |            |            |
|----------|-----|------------|------------|
| 10 Pack. |     | Torx       | 19.069-P10 |
| 10 Pack. | DLC | Torx       | 19.269-P10 |
| 10 Pack. |     | Hex 1,20mm | 19.093-P10 |
| 10 Pack. |     | Hex 1,22mm | 19.094-P10 |
| 10 Pack. |     | Hex 1,27mm | 19.095-P10 |
| 10 Pack. |     | UG         | 19.096-P10 |

|                    |        |
|--------------------|--------|
| Recommended torque | 20 Ncm |
|--------------------|--------|



SCREW UG

|          |            |         |
|----------|------------|---------|
|          | 19.006     | 19.031  |
| 10 Pack. | 19.006-P10 |         |
| DLC      | 19.206     | 19.231  |
| TiN      | 19.606*    | 19.631* |

|            |        |
|------------|--------|
| Hex 1,20mm | 19.055 |
| Hex 1,22mm | 19.065 |
| Hex 1,27mm | 19.110 |

|                    |        |        |
|--------------------|--------|--------|
| Recommended torque | 15 Ncm | 15 Ncm |
|--------------------|--------|--------|

DESSLoc®

|        |
|--------|
| 88.007 |
|--------|

CoCr BASE

|                         |            |                       |        |
|-------------------------|------------|-----------------------|--------|
| 6,0mm                   |            | 30.007                | 30.054 |
| 6,0mm                   | Hex 1,20mm | 30.007H120*<br>19.055 |        |
| 6,0mm                   | Hex 1,22mm | 30.007H122*<br>19.065 |        |
| 6,0mm                   | Hex 1,27mm | 30.007H127*<br>19.110 |        |
| 6,0mm                   | Torx       | 30.007TB*<br>19.306   |        |
| For wealding techniques |            | 30.107*               |        |

CASTABLE

|          |  |            |            |
|----------|--|------------|------------|
|          |  | 28.007     | 28.054     |
| 10 Pack. |  | 11.007-P10 | 11.054-P10 |





NEU

| NobelActive® & NobelReplace® CC |     |  | 3.0                        | NP       | RP       | WP  |
|---------------------------------|-----|--|----------------------------|----------|----------|-----|
| Active Hex                      |     |  | 3.0                        | 3.5      | 4.3/5.0  | 5.5 |
| GH 1,5mm                        | 0°  |  |                            | 40.007/1 | 40.008/1 |     |
| GH 2,5mm                        | 0°  |  |                            | 40.007/2 | 40.008/2 |     |
| GH 3,5mm                        | 0°  |  |                            | 40.007/3 | 40.008/3 |     |
| GH 4,5mm                        | 0°  |  |                            |          | 40.008/4 |     |
| GH 2,5mm                        | 17° |  |                            | 41.404/2 | 41.405/2 |     |
| GH 3,5mm                        | 17° |  |                            | 41.404/3 | 41.405/3 |     |
| GH 3,5mm                        | 30° |  |                            | 43.404/3 | 43.405/3 |     |
| GH 4,5mm                        | 30° |  |                            | 43.404/4 | 43.405/4 |     |
|                                 |     |  | 4.8<br>MULTI-UNIT PLATFORM |          |          |     |



| NobelReplace Select™ |     |   |  | NP                         | RP        | WP       | 6.0 |
|----------------------|-----|---|--|----------------------------|-----------|----------|-----|
| Tri-lobe             |     |   |  | NP/3.5                     | RP/4.3    | WP/5.0   | 6.0 |
| GH 1,0mm             | 0°  | ○ |  | 40.004/1                   | 40.005/1  | 40.006/1 |     |
| GH 2,0mm             | 0°  | ○ |  | 40.004/2                   | 40.005/2  | 40.006/2 |     |
| GH 3,0mm             | 0°  | ○ |  | 40.004/3                   | 40.005/3  | 40.006/3 |     |
| GH 4,0mm             | 0°  | ○ |  |                            | 40.005/4  |          |     |
| GH 5,0mm             | 0°  | ○ |  |                            | 40.005/5  |          |     |
| GH 2,0mm             | 17° | ◁ |  | 41.704/2                   | 41.705/2  |          |     |
| GH 3,0mm             | 17° | ◁ |  | 41.704/3                   | 41.705/3  |          |     |
| GH 4,0mm             | 17° | ◁ |  |                            | 41.705/4  |          |     |
| GH 4,0mm             | 30° | ◁ |  |                            | 43.005/4  |          |     |
| GH 5,0mm             | 30° | ◁ |  |                            | 43.005/5  |          |     |
| GH 5,0mm             | 30° | ○ |  |                            | 43.005/5R |          |     |
|                      |     |   |  | 4.8<br>MULTI-UNIT PLATFORM |           |          |     |

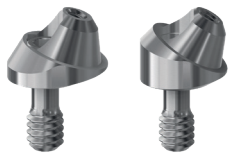


| NobelActive® & NobelReplace® CC |     |  | 3.0                        | NP       | RP       | WP  |
|---------------------------------|-----|--|----------------------------|----------|----------|-----|
| Active Hex                      |     |  | 3.0                        | 3.5      | 4.3/5.0  | 5.5 |
| GH 1,5mm                        | 0°  |  |                            | 42.407/1 | 42.408/1 |     |
| GH 2,5mm                        | 0°  |  |                            | 42.407/2 | 42.408/2 |     |
| GH 3,5mm                        | 0°  |  |                            | 42.407/3 | 42.408/3 |     |
| GH 4,5mm                        | 0°  |  |                            |          | 42.408/4 |     |
| GH 2,5mm                        | 17° |  |                            | 46.407/2 | 46.408/2 |     |
| GH 3,5mm                        | 17° |  |                            | 46.407/3 | 46.408/3 |     |
| GH 3,5mm                        | 30° |  |                            | 47.407/3 | 47.408/3 |     |
| GH 4,5mm                        | 30° |  |                            | 47.407/4 | 47.408/4 |     |
|                                 |     |  | 4.8<br>MULTI-UNIT PLATFORM |          |          |     |



| Nobel Brånemark®       |     |   |  | NP                         | RP        | WP       |
|------------------------|-----|---|--|----------------------------|-----------|----------|
| External Hex Universal |     |   |  | NP/3.5                     | RP/4.1    | WP/5.1   |
| GH 1,0mm               | 0°  | ○ |  | 40.001/1                   | 40.002/1  | 40.003/1 |
| GH 2,0mm               | 0°  | ○ |  | 40.001/2                   | 40.002/2  | 40.003/2 |
| GH 3,0mm               | 0°  | ○ |  | 40.001/3                   | 40.002/3  | 40.003/3 |
| GH 4,0mm               | 0°  | ○ |  |                            | 40.002/4  |          |
| GH 5,0mm               | 0°  | ○ |  |                            | 40.002/5  |          |
| GH 2,0mm               | 17° | ⬡ |  | 41.701/2*                  | 41.702/2* |          |
| GH 3,0mm               | 17° | ⬡ |  | 41.701/3*                  | 41.702/3* |          |
| GH 4,0mm               | 17° | ⬡ |  |                            | 41.702/4* |          |
| GH 4,0mm               | 30° | ⬡ |  |                            | 43.002/4* |          |
| GH 5,0mm               | 30° | ⬡ |  |                            | 43.002/5* |          |
|                        |     |   |  | 4.8<br>MULTI-UNIT PLATFORM |           |          |
|                        |     |   |  | 6.5                        |           |          |

\*NOT FDA



3i Osseotite®  
External Hex USA

|          |     |   | NP       | RP       | WP  |
|----------|-----|---|----------|----------|-----|
|          |     |   | 3.4      | 4.1      | 5.0 |
| GH 1,0mm | 0°  | ○ | 40.009/1 | 40.017/1 |     |
| GH 2,0mm | 0°  | ○ | 40.009/2 | 40.017/2 |     |
| GH 3,0mm | 0°  | ○ | 40.009/3 | 40.017/3 |     |
| GH 4,0mm | 0°  | ○ |          | 40.017/4 |     |
| GH 5,0mm | 0°  | ○ |          | 40.017/5 |     |
| GH 2,0mm | 17° | ⬡ |          | 41.712/2 |     |
| GH 3,0mm | 17° | ⬡ |          | 41.712/3 |     |
| GH 4,0mm | 17° | ⬡ |          | 41.712/4 |     |
| GH 3,0mm | 30° | ⬡ |          | 43.012/3 |     |
| GH 4,0mm | 30° | ⬡ |          | 43.012/4 |     |
| GH 5,0mm | 30° | ⬡ |          | 43.012/5 |     |

4.8  
MULTI-UNIT PLATFORM



3i Certain®  
Internal Hex "click"

|          |     |   | NP        | RP        | WP  |
|----------|-----|---|-----------|-----------|-----|
|          |     |   | 3.4       | 4.1       | 5.0 |
| GH 1,0mm | 0°  |   | 40.022/1* | 40.023/1* |     |
| GH 2,0mm | 0°  | ○ | 40.022/2* | 40.023/2* |     |
| GH 3,0mm | 0°  | ○ | 40.022/3* | 40.023/3* |     |
| GH 4,0mm | 0°  | ○ | 40.022/4* | 40.023/4* |     |
| GH 5,0mm | 0°  | ○ | 40.022/5* | 40.023/5* |     |
| GH 2,5mm | 17° | ⬡ | 41.422/2* | 41.423/2* |     |
| GH 3,5mm | 17° | ⬡ | 41.422/3* | 41.423/3* |     |
| GH 3,5mm | 30° | ⬡ | 43.422/3* | 43.423/3* |     |
| GH 4,5mm | 30° | ⬡ | 43.422/4* | 43.423/4* |     |

4.8  
MULTI-UNIT PLATFORM



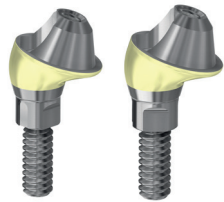
A

B

Straumann® bone level  
Conical BL

|          |          |     | NP        | RP         | SRA |
|----------|----------|-----|-----------|------------|-----|
|          |          |     | NC/3.3    | RC/4.1-4.8 | 4.6 |
|          | GH 1,5mm | 0°  | 40.043/1  | 40.044/1   |     |
|          | GH 2,5mm | 0°  | 40.043/2  | 40.044/2   |     |
|          | GH 3,5mm | 0°  | 40.043/3  | 40.044/3   |     |
|          | GH 4,5mm | 0°  |           | 40.044/4   |     |
| A corner | GH 2,5mm | 17° | 41.443/2* | 41.444/2*  |     |
| B flat   | GH 2,5mm | 17° | 41.491/2  | 41.492/2   |     |
| A corner | GH 3,5mm | 17° | 41.443/3* | 41.444/3*  |     |
| B flat   | GH 3,5mm | 17° | 41.491/3  | 41.492/3   |     |
| A corner | GH 3,5mm | 30° | 43.443/3* | 43.444/3*  |     |
| B flat   | GH 3,5mm | 30° | 43.491/3  | 43.492/3   |     |
| A corner | GH 4,5mm | 30° | 43.443/4* | 43.444/4*  |     |
| B flat   | GH 4,5mm | 30° | 43.491/4  | 43.492/4   |     |

4.8  
MULTI-UNIT PLATFORM



A

B

Straumann® bone level  
Conical BL

|          |          |     | NP        | RP         | SRA |
|----------|----------|-----|-----------|------------|-----|
|          |          |     | NC/3.3    | RC/4.1-4.8 | 4.6 |
|          | GH 1,5mm | 0°  | 42.443/1  | 42.444/1   |     |
|          | GH 2,5mm | 0°  | 42.443/2  | 42.444/2   |     |
|          | GH 3,5mm | 0°  | 42.443/3  | 42.444/3   |     |
|          | GH 4,5mm | 0°  |           | 42.444/4   |     |
| A corner | GH 2,5mm | 17° | 46.443/2  | 46.444/2   |     |
| B flat   | GH 2,5mm | 17° | 46.491/2* | 46.492/2*  |     |
| A corner | GH 3,5mm | 17° | 46.443/3  | 46.444/3   |     |
| B flat   | GH 3,5mm | 17° | 46.491/3* | 46.492/3*  |     |
| A corner | GH 3,5mm | 30° | 47.443/3  | 47.444/3   |     |
| B flat   | GH 3,5mm | 30° | 47.491/3* | 47.492/3*  |     |
| A corner | GH 4,5mm | 30° | 47.443/4  | 47.444/4*  |     |
| B flat   | GH 4,5mm | 30° | 47.491/4* | 47.492/4*  |     |

4.8  
MULTI-UNIT PLATFORM

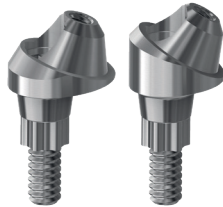




NEW  
MUA+

GM

|          |     |   |          |
|----------|-----|---|----------|
| GH 0,8mm | 0°  | ○ | 42.454/1 |
| GH 1,5mm | 0°  | ○ | 42.435/1 |
| GH 2,5mm | 0°  | ○ | 42.435/2 |
| GH 3,5mm | 0°  | ○ | 42.435/3 |
| GH 4,5mm | 0°  | ○ | 42.435/4 |
| GH 5,5mm | 0°  | ○ | 42.435/5 |
| GH 1,5mm | 17° | ⬡ | 46.435/2 |
| GH 2,5mm | 17° | ⬡ | 46.435/3 |
| GH 3,5mm | 17° | ⬡ | 46.435/4 |
| GH 1,5mm | 30° | ⬡ | 47.435/3 |
| GH 2,5mm | 30° | ⬡ | 47.435/4 |
| GH 3,5mm | 30° | ⬡ | 47.435/5 |



Straumann® BLX  
Conical BLX

|          |     |   |
|----------|-----|---|
| GH 1,5mm | 0°  | ○ |
| GH 2,5mm | 0°  | ○ |
| GH 3,5mm | 0°  | ○ |
| GH 2,5mm | 17° | ⬡ |
| GH 3,5mm | 17° | ⬡ |
| GH 3,5mm | 30° | ⬡ |
| GH 4,5mm | 30° | ⬡ |

RB/WB

WB

3.5

4.5

4.8  
MULTI-UNIT PLATFORM

|          |          |
|----------|----------|
| 40.062/1 | 40.062/1 |
| 40.062/2 | 40.062/2 |
| 40.062/3 | 40.062/3 |
| 41.762/2 | 41.762/2 |
| 41.762/3 | 41.762/3 |
| 43.062/3 | 43.062/3 |
| 43.062/4 | 43.062/4 |

NEW  
MULTI-UNIT  
ABUTMENTS



|          |     |   |          |
|----------|-----|---|----------|
| GH 0,8mm | 0°  | ○ | 40.054/1 |
| GH 1,5mm | 0°  | ○ | 40.035/1 |
| GH 2,5mm | 0°  | ○ | 40.035/2 |
| GH 3,5mm | 0°  | ○ | 40.035/3 |
| GH 4,5mm | 0°  | ○ | 40.035/4 |
| GH 5,5mm | 0°  | ○ | 40.035/5 |
| GH 1,5mm | 17° | ⬡ | 41.485/2 |
| GH 2,5mm | 17° | ⬡ | 41.485/3 |
| GH 3,5mm | 17° | ⬡ | 41.485/4 |
| GH 1,5mm | 30° | ⬡ | 43.485/3 |
| GH 2,5mm | 30° | ⬡ | 43.485/4 |
| GH 3,5mm | 30° | ⬡ | 43.485/5 |



Zimmer Screw-vent®  
Internal Hex USA

|          |     |   |
|----------|-----|---|
| GH 1,0mm | 0°  | ○ |
| GH 2,0mm | 0°  | ○ |
| GH 3,0mm | 0°  | ○ |
| GH 4,0mm | 0°  | ○ |
| GH 5,0mm | 0°  | ○ |
| GH 2,5mm | 17° | ⬡ |
| GH 3,5mm | 17° | ⬡ |
| GH 3,5mm | 30° | ⬡ |
| GH 4,5mm | 30° | ⬡ |

NP

RP

WP

3.5

4.5

5.7

4.8  
MULTI-UNIT PLATFORM

|          |          |
|----------|----------|
| 40.019/1 | 40.020/1 |
| 40.019/2 | 40.020/2 |
| 40.019/3 | 40.020/3 |
| 40.019/4 | 40.020/4 |
| 40.019/5 | 40.020/5 |
| 41.719/2 | 41.720/2 |
| 41.719/3 | 41.720/3 |
| 43.019/3 | 43.020/3 |
| 43.019/4 | 43.020/4 |



Astra Tech  
implant system™ EV  
Conic EVO

|          |     |   | EV/3.0   | EV/3.6   | EV/4.2   | EV/4.8   | EV/5.4   |
|----------|-----|---|----------|----------|----------|----------|----------|
|          |     |   | 3.0      | 3.6      | 4.2      | 4.8      | 5.4      |
| GH 1,5mm | 0°  | ○ | 40.406/1 | 40.027/1 | 40.036/1 | 40.037/1 | 40.407/1 |
| GH 2,5mm | 0°  | ○ | 40.406/2 | 40.027/2 | 40.036/2 | 40.037/2 | 40.407/2 |
| GH 3,5mm | 0°  | ○ | 40.406/3 | 40.027/3 | 40.036/3 | 40.037/3 | 40.407/3 |
| GH 3,5mm | 17° | ⦶ |          | 41.727/3 | 41.736/3 | 41.737/3 |          |
| GH 4,5mm | 17° | ⦶ |          | 41.727/4 | 41.736/4 | 41.737/4 |          |
| GH 4,5mm | 30° | ⦶ |          | 43.027/4 | 43.036/4 | 43.037/4 |          |
| GH 5,5mm | 30° | ⦶ |          | 43.027/5 | 43.036/5 | 43.037/5 |          |

4.8  
MULTI-UNIT PLATFORM

Astra Tech Osseospeed™  
Internal Hex Conic

|          |     |   | NP  | RP       | WP       |
|----------|-----|---|-----|----------|----------|
|          |     |   | 3.0 | 3.5-4.0  | 4.5-5.0  |
| GH 1,5mm | 0°  | ○ |     | 40.024/1 | 40.025/1 |
| GH 2,5mm | 0°  | ○ |     | 40.024/2 | 40.025/2 |
| GH 3,5mm | 0°  | ○ |     | 40.024/3 | 40.025/3 |
| GH 3,5mm | 17° | ⦶ |     | 41.724/3 | 41.725/3 |
| GH 4,5mm | 17° | ⦶ |     | 41.724/4 | 41.725/4 |
| GH 4,5mm | 30° | ⦶ |     | 43.024/4 | 43.025/4 |
| GH 5,5mm | 30° | ⦶ |     | 43.024/5 | 43.025/5 |

4.8  
MULTI-UNIT PLATFORM

Osstem® TS  
Conic OSS

|          |     |   | Mini      | STD       |
|----------|-----|---|-----------|-----------|
|          |     |   | Mini      | Regular   |
| GH 1,5mm | 0°  | ○ | 40.072/1  | 40.073/1  |
| GH 2,5mm | 0°  | ○ | 40.072/2  | 40.073/2  |
| GH 3,5mm | 0°  | ○ | 40.072/3  | 40.073/3  |
| GH 2,5mm | 17° | ⦶ | 41.772/2* | 41.773/2* |
| GH 3,5mm | 17° | ⦶ | 41.772/3* | 41.773/3* |
| GH 3,5mm | 30° | ⦶ | 43.072/3* | 43.073/3* |
| GH 4,5mm | 30° | ⦶ | 43.072/4* | 43.073/4* |

4.8  
MULTI-UNIT PLATFORM



BioHorizons® internal  
Internal Hex BH

|          |     |   | 3.0 | NP        | RP        | WP  |
|----------|-----|---|-----|-----------|-----------|-----|
|          |     |   | 3.0 | 3.5       | 4.5       | 5.7 |
| GH 1,0mm | 0°  | ○ |     | 40.087/1  | 40.088/1  |     |
| GH 2,0mm | 0°  | ○ |     | 40.087/2  | 40.088/2  |     |
| GH 3,0mm | 0°  | ○ |     | 40.087/3  | 40.088/3  |     |
| GH 4,0mm | 0°  | ○ |     | 40.087/4  |           |     |
| GH 5,0mm | 0°  | ○ |     | 40.087/5  |           |     |
| GH 2,5mm | 17° | ⦶ |     | 41.787/2* | 41.788/2* |     |
| GH 3,5mm | 17° | ⦶ |     | 41.787/3* | 41.788/3* |     |
| GH 3,5mm | 30° | ⦶ |     | 43.087/3* | 43.088/3* |     |
| GH 4,5mm | 30° | ⦶ |     | 43.087/4* | 43.088/4* |     |

4.8  
MULTI-UNIT PLATFORM

MIS® Seven  
Internal Hex MI

|          |     |   | NP  | SP       | WP       | Multi-Unit |
|----------|-----|---|-----|----------|----------|------------|
|          |     |   | 3.3 | 3.75-4.2 | 5.0-6.0  | 4.8        |
| GH 1,0mm | 0°  | ○ |     | 40.095/1 | 40.096/1 |            |
| GH 2,0mm | 0°  | ○ |     | 40.095/2 | 40.096/2 |            |
| GH 3,0mm | 0°  | ○ |     | 40.095/3 | 40.096/3 |            |
| GH 4,0mm | 0°  | ○ |     | 40.095/4 |          |            |
| GH 5,0mm | 0°  | ○ |     | 40.095/5 |          |            |
| GH 2,5mm | 17° | ⦶ |     | 41.795/2 | 41.796/2 |            |
| GH 3,5mm | 17° | ⦶ |     | 41.795/3 | 41.796/3 |            |
| GH 3,5mm | 30° | ⦶ |     | 43.095/3 | 43.096/3 |            |
| GH 4,5mm | 30° | ⦶ |     | 43.095/4 | 43.096/4 |            |

4.8  
MULTI-UNIT PLATFORM

\*NOT FDA

\*NOT FDA



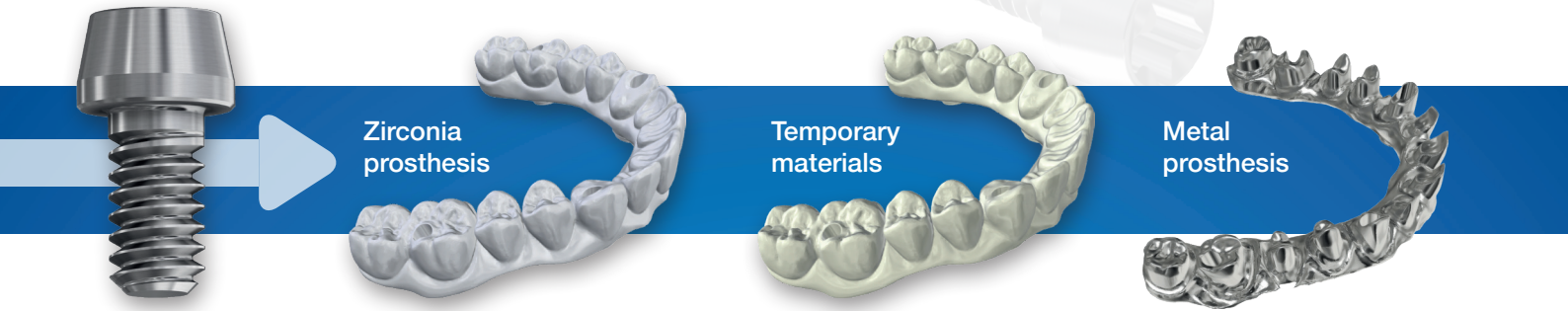
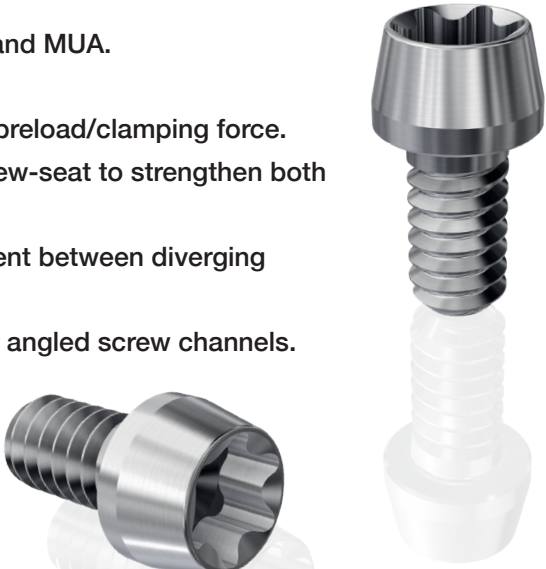


| Dentium Superline™ & Implantium |     |   |  | RP  |     |     |     |     |
|---------------------------------|-----|---|--|-----|-----|-----|-----|-----|
| Conic Dent                      |     |   |  | 3.6 | 3.8 | 4.0 | 4.5 | 5.0 |
| GH 1,5mm                        | 0°  | ○ |  |     |     |     |     |     |
| GH 2,5mm                        | 0°  | ○ |  |     |     |     |     |     |
| GH 3,5mm                        | 0°  | ○ |  |     |     |     |     |     |
| GH 2,5mm                        | 17° | ⬡ |  |     |     |     |     |     |
| GH 3,5mm                        | 17° | ⬡ |  |     |     |     |     |     |
| GH 2,5mm                        | 30° | ⬡ |  |     |     |     |     |     |
| GH 3,5mm                        | 30° | ⬡ |  |     |     |     |     |     |

# DESS® DESIGN: FLAT SEAT

## FLAT SEAT ADVANTAGES

- Allows for higher preload/clamping force between the structure and MUA.
- More forgiving of inaccuracies in internal milling of screw seat.
- Version with DLC coating to reduce friction and further increase preload/clamping force.
- Length of screw allows for more structure material under the screw-seat to strengthen both zirconia and temporary structures.
- Flat seat is self-centering and allows for a more forgiving alignment between diverging long-axis of the structure and MUA
- Torx connection compatible with DESS® Torx ball screwdriver for angled screw channels.



All DESS products are manufactured according to ISO 9001 and ISO 13485 with CE marking for all products Class IIb

All DESS® ANGLEBase® screws and screwdrivers are based on the standard ISO 10664

3i® and 3i Certain®, Miniplant®, MicroMiniplant™ and Osseotite® are registered trademarks of 3i Implant Innovations, USA

ASTRA TECH™, OsseoSpeed™, ANKYLOS® C/X, XiVE®, FRIADENT®, ASTRATECH implant system™ EV and UniAbutment®

Cerec® are registered trademarks of DENTSPLY SIRONA Implants

BioHorizons® is a registered trademark of BioHorizons, INC.

Brånemark System®, NobelReplace® and Replace Select™, NobelActive™, NobelReplace® CC, NobelSpeedy™ and Multi-unit® are registered trademarks of Nobel Biocare AB,

Neodent®, Grand Morse®, Straumann® and synOcta® are registered trademarks of Straumann Holding AG, Switzerland

MIS® is a registered trademark of MIS Implant Technologies Ltd.

Zimmer Screw-Vent® and SwissPlus® are registered trademarks of Zimmer Dental INC, USA

Dyna® is a registered trademark of Dyna Dental Engineering BV

Locator® is a registered trademark of ZEST IP Holdings

Camlog® and Conelog® are registered trademarks of CAMLOG Biotechnologies AG

Megagen® is a registered trademark of MEGAGEN IMPLANT CO. LTD

TORX® is a trademark of ACUMENT INTELLECTUAL PROPERTIES, LLC

Bego Semados® is a registered trademark of BEGO GmbH & Co. KG

Anthogyr® is a registered trademark of Anthogyr SAS

Medentis ICX® is a registered trademark of medentis medical GmbH

Osstem®, Hiossen® is a registered trademark of OSSTEM IMPLANT CO. LTD

Dentium® is a trademark of Dentium Co. Ltd.

GOBALD® is a trademark of Global D SASU.

Biotech Kontakt® is a trademark Biotech Dental SAS.

BTI® is a trademark BTI Biotechnology Institute.

PHIBO® is a trademark PHIBO Dental Solutions S.L.

DESS products can be used only by licensed dentists, physicians and labs.  
Please refer ever to the instructions of use available on the website  
[www.dessdental.com](http://www.dessdental.com)  
or supplied with the product.

Some products may not be available in your country. Some of the products are cleared for US and Canada.  
Please contact your local distributor for more details.



Health Canada  
Medical Device Licenses  
94512 & 107023



\*NOT FDA









[www.dessdental.com](http://www.dessdental.com)

MUA-EN/2025